

# HEALTH JUSTICE PARTNERSHIP InTouch & Monash Health

Fiona McAlinden Director Sub-acute Care  
Monash Health



Monash**Health**

# Population City of Dandenong

Figure 1. City of Greater Dandenong



Population: in excess of 135,600 residents  
30877 women residing in the City of Dandenong were born overseas

Over 170 community languages spoken  
55% from non-English speaking backgrounds  
14% have limited English fluency

Top ten non-English speaking countries of birth:  
Vietnam, India, Sri Lanka, Cambodia, China,  
Afghanistan, Bosnia, Greece, Mauritius,  
Philippines

From the findings of the 2011 Census, Profile of Victorian Municipalities. [www.greaterdandenong.com](http://www.greaterdandenong.com), Accessed 8 Oct 2016

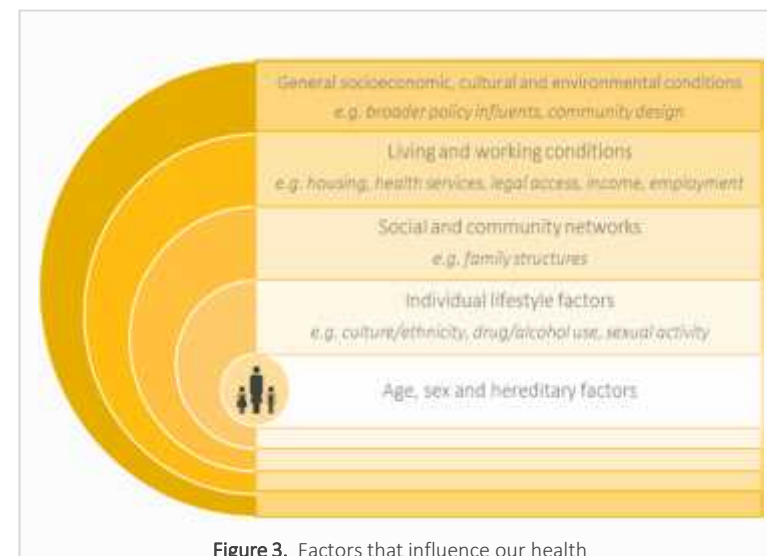


Figure 3. Factors that influence our health

# Population City of Dandenong

Figure 1. City of Greater Dandenong



Population: in excess of 135,600 residents  
 30877 women residing in the City of Dandenong were born overseas  
 Over 170 community languages spoken  
 55% from non-English speaking backgrounds  
 14% have limited English fluency  
 Top ten non-English speaking countries of birth:  
 Vietnam, India, Sri Lanka, Cambodia, China,  
 Afghanistan, Bosnia, Greece, Mauritius,  
 Philippines

From the findings of the 2011 Census, Profile of Victorian Municipalities. [www.greaterdandenong.com](http://www.greaterdandenong.com), Accessed 8 Oct 2016



Figure 1. City of Greater Dandenong



- Population: in excess of 135,600 residents
- 30877 women residing in the City of Dandenong were born overseas
- Over 170 community languages spoken
- 55% from non-English speaking backgrounds
- 14% have limited English fluency
- Top ten non-English speaking countries of birth: Vietnam, India, Sri Lanka, Cambodia, China, Afghanistan, Bosnia, Greece, Mauritius, Philippines

From the findings of the 2011 Census, Profile of Victorian Municipalities. [www.greaterdandenong.com](http://www.greaterdandenong.com), Accessed 8 Oct 2016

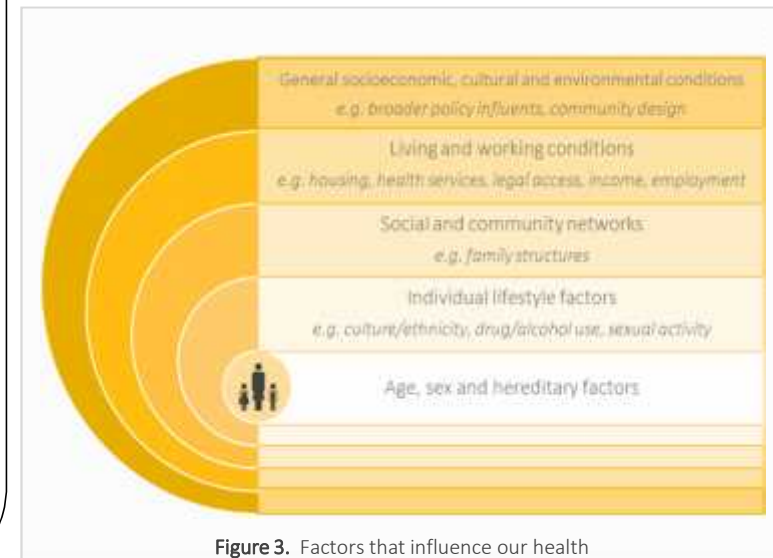


Figure 3. Factors that influence our health

# InTouch Multicultural Centre Against Family Violence

Services &  
Programs  
in response to family violence

Leading Contributing factor  
to ill health, death & disease  
for ♀ aged 15-44yrs in Victoria

Servicing migrant and  
refugee communities

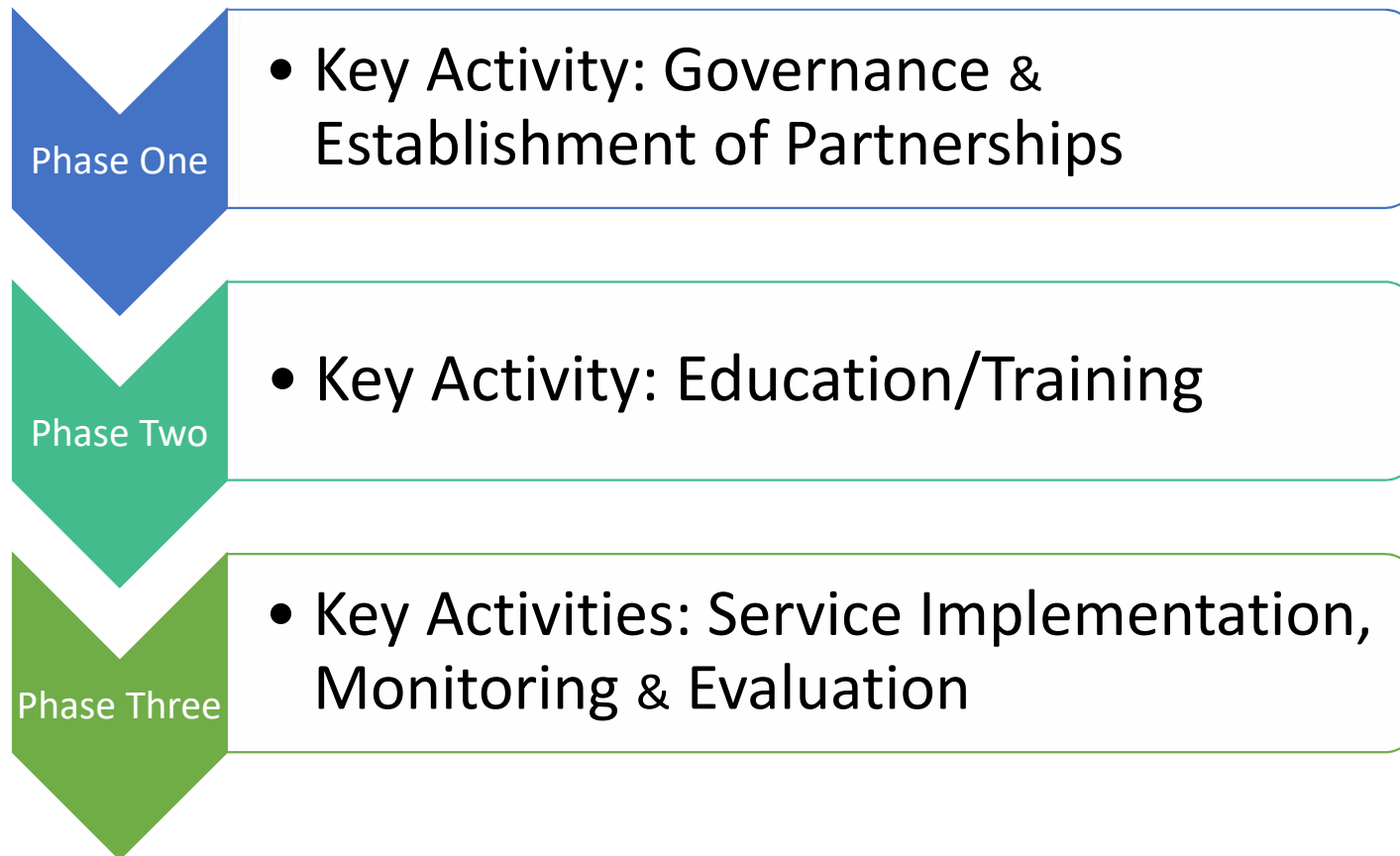


Link between social factors  
and health



Therapeutic, culturally  
sensitive lawyering with an  
integrated response

# Service Development



# The Story – *The Monash Health Chapter*



# Setting up the Service

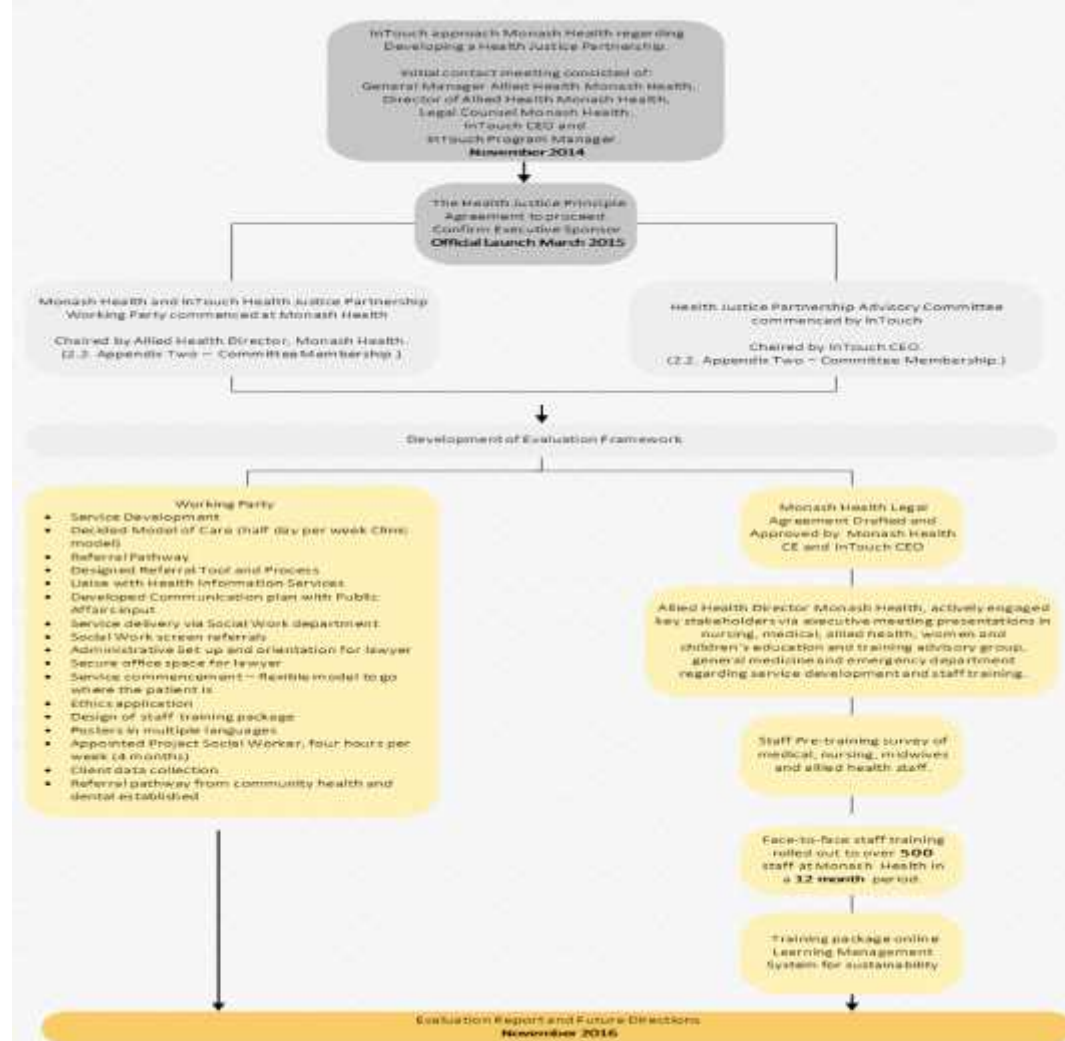


- Legal Agreement
- Social Work & Lawyers
- Working Party

- Focus Groups & Education
- Orientation of Lawyers
- Referral Form & Pathways

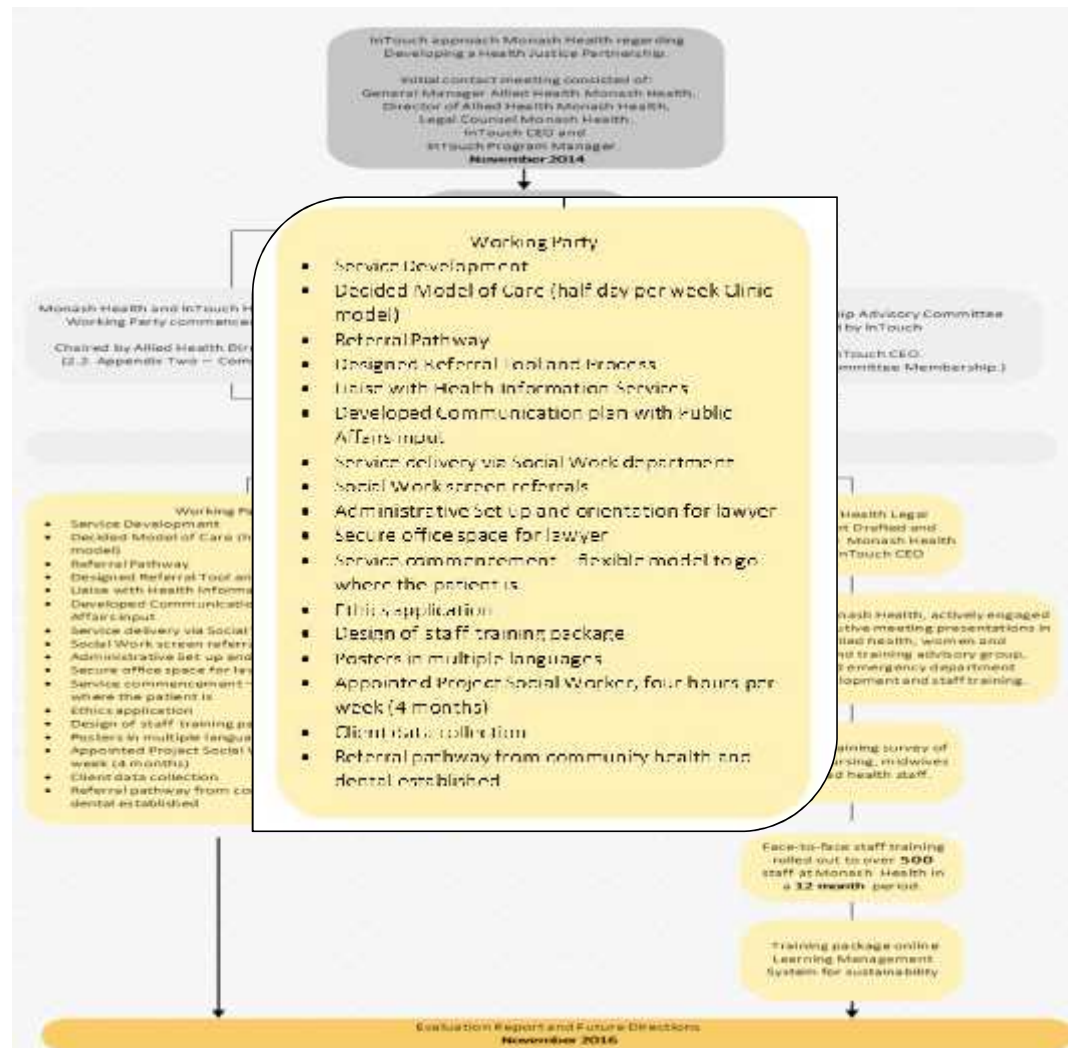
- Logistics & Documentation
- Interpreting
- Evaluation framework

# The Quick Version

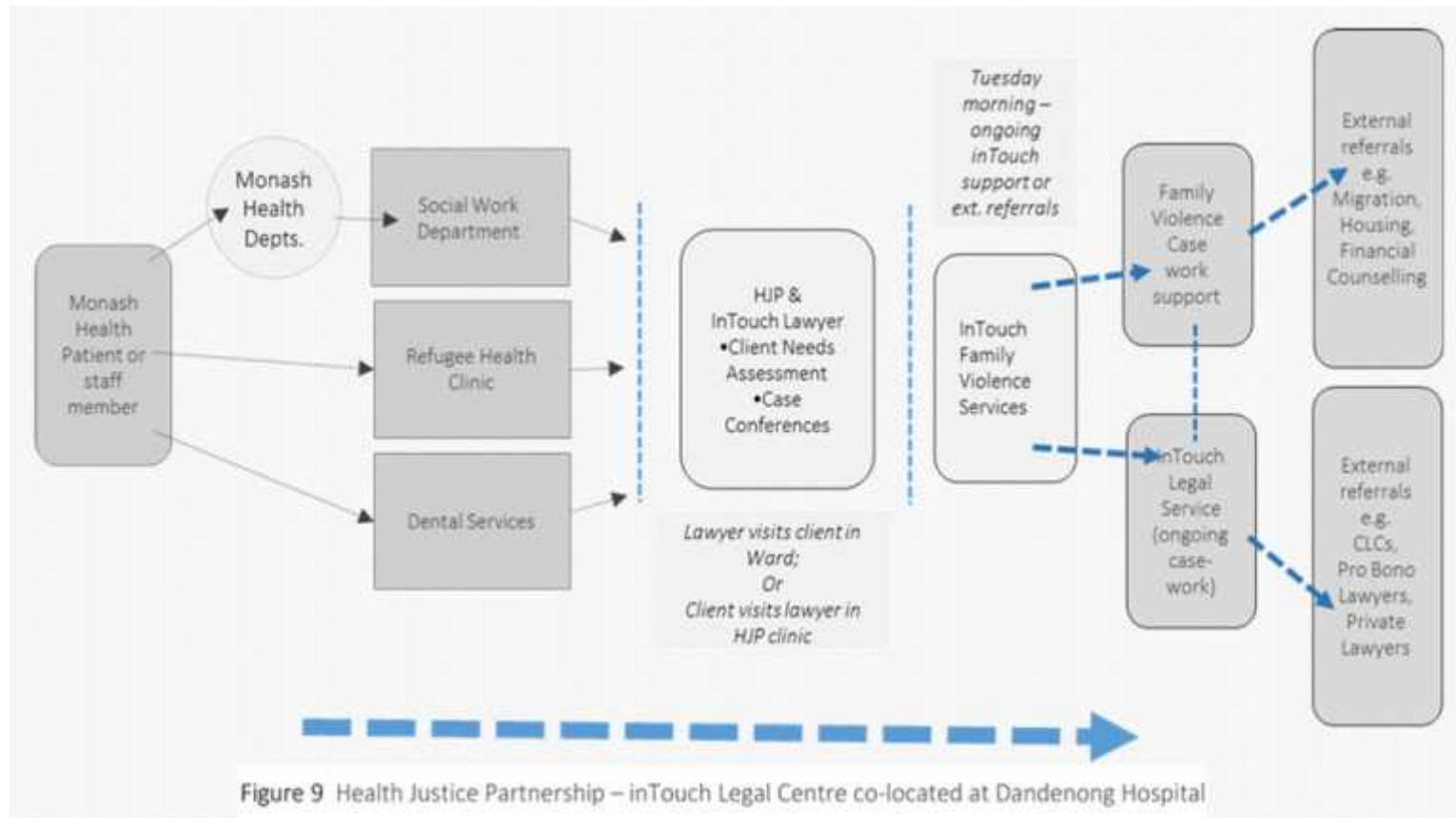




# The Quick Version



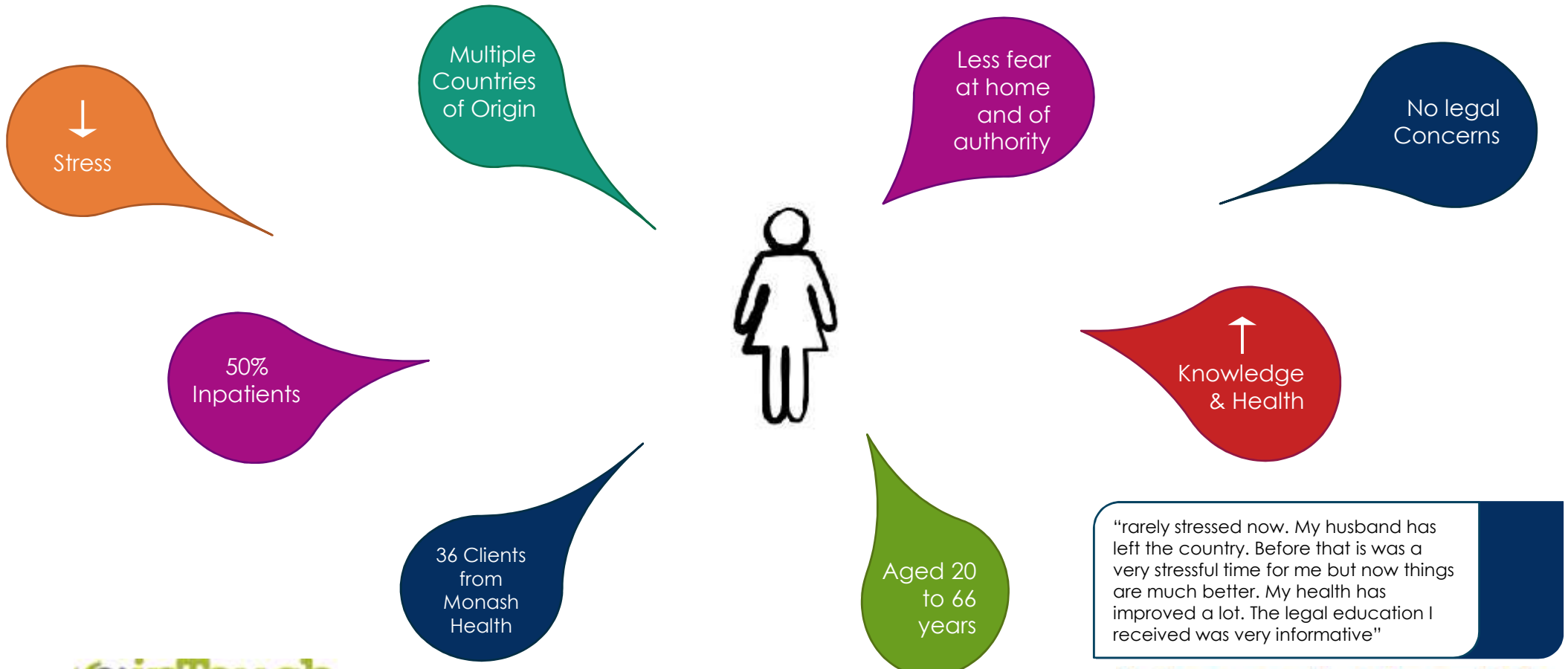
# Establishment of the Legal Outpost



# Fatima's Story

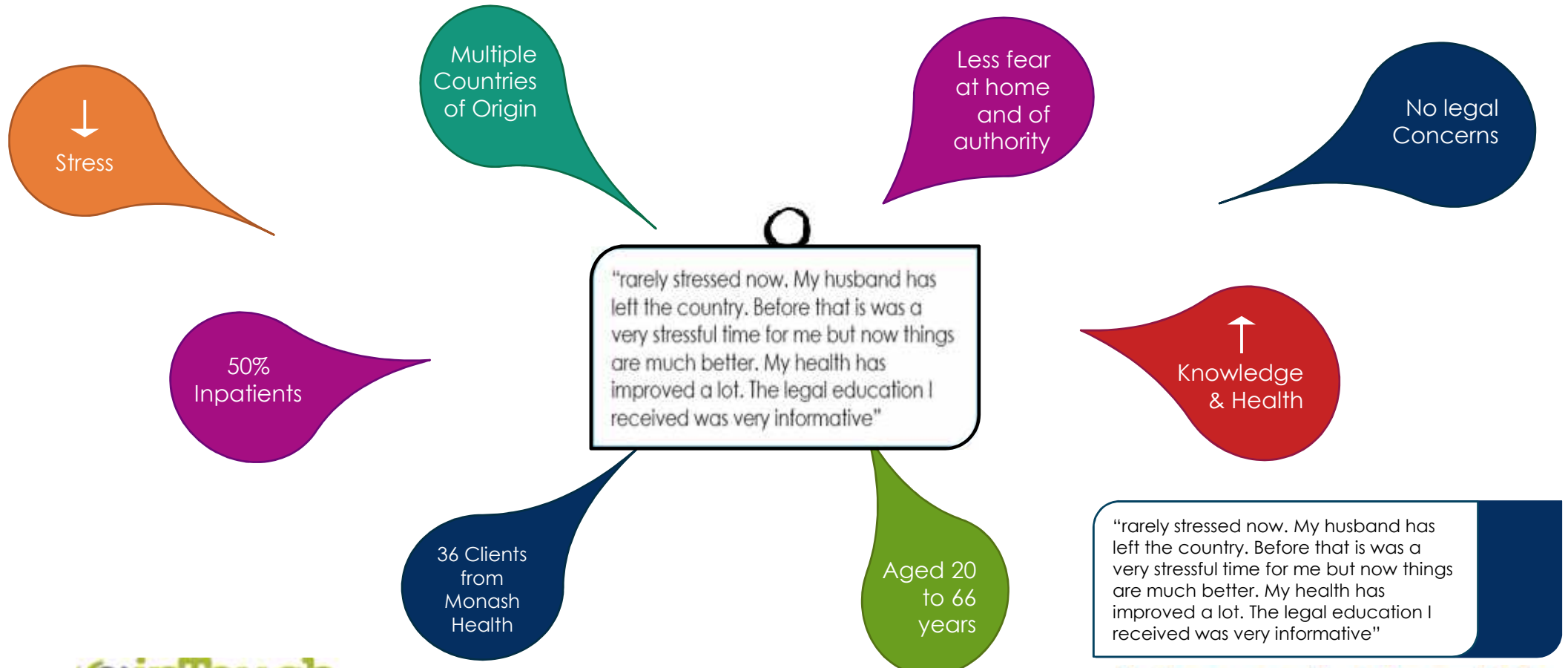


# Evaluation

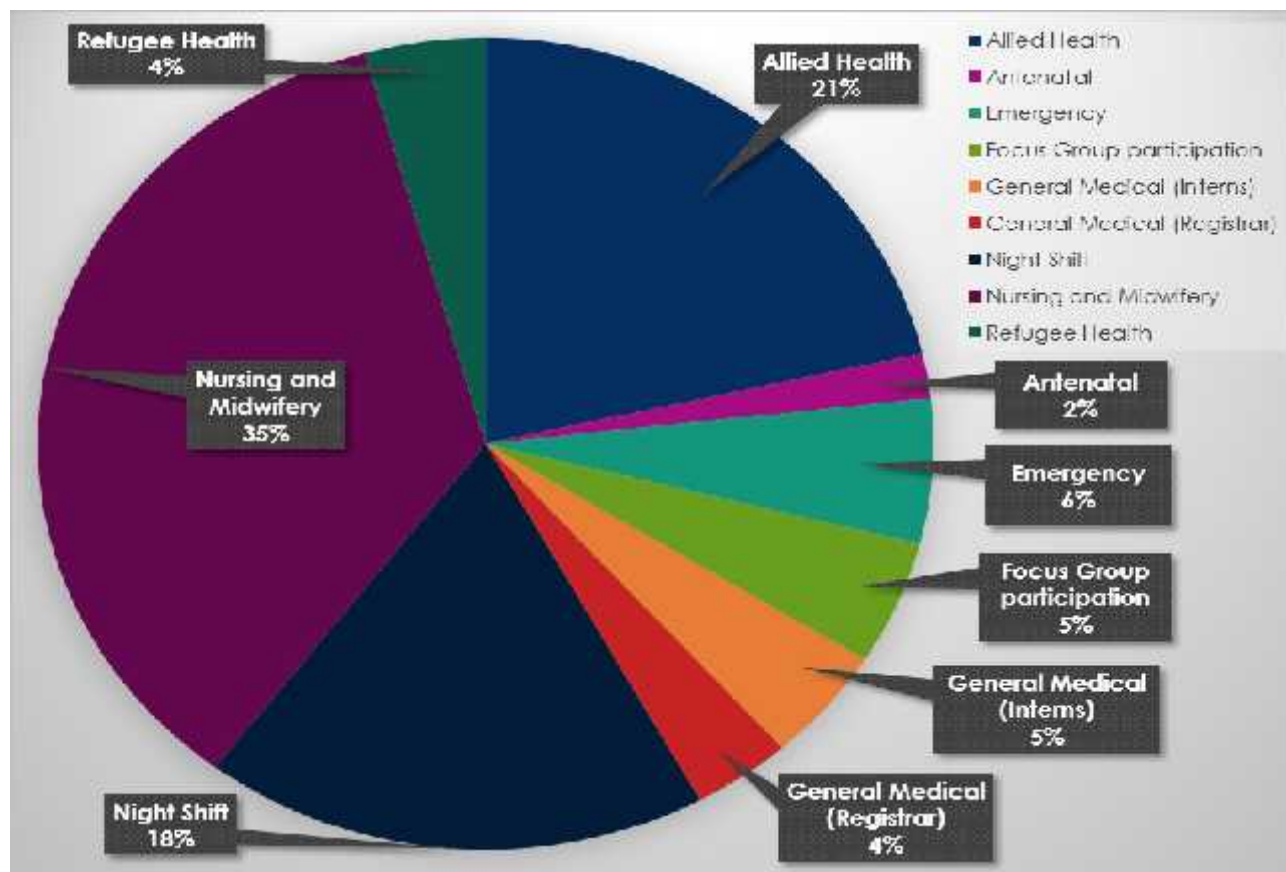


"rarely stressed now. My husband has left the country. Before that is was a very stressful time for me but now things are much better. My health has improved a lot. The legal education I received was very informative"

# Evaluation

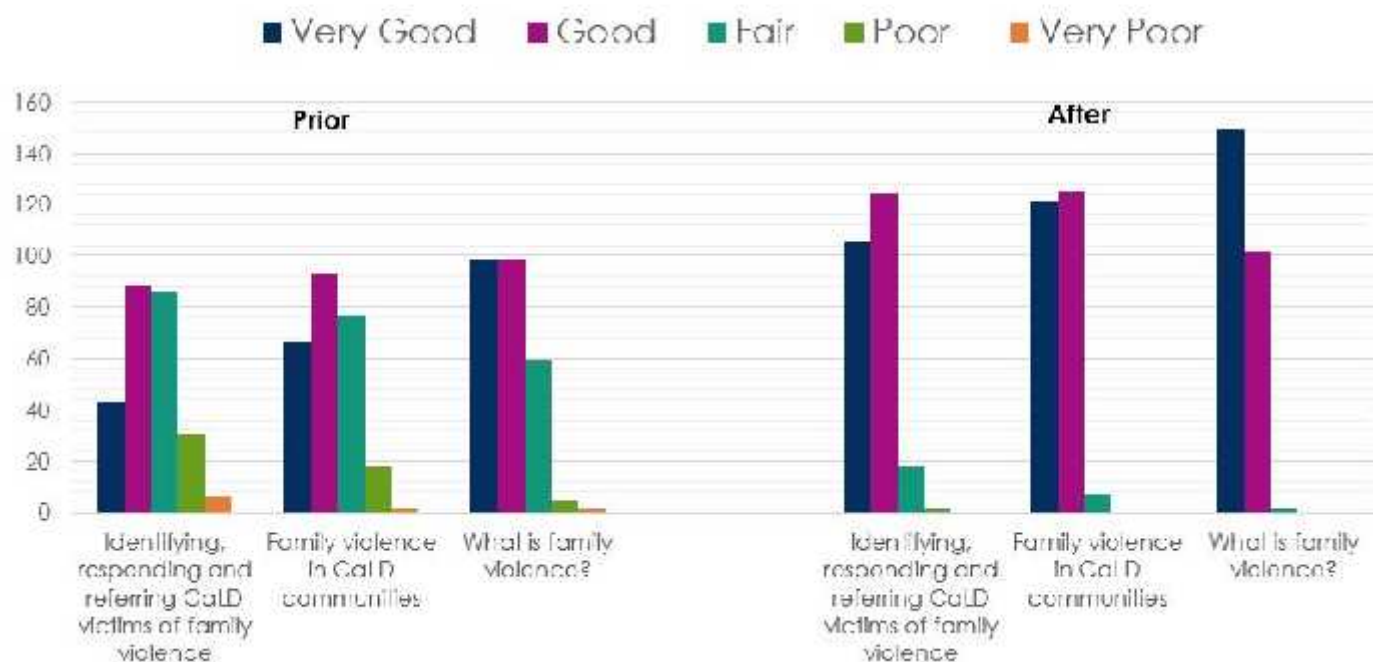


# Training and Evaluation



# Training

Health professional rating of skills and knowledge prior and after attending HJP sessions

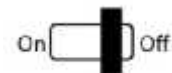


# Outcomes and Learnings

Integration model that works

+ experience of partnership

Process experience & expansion of wisdom

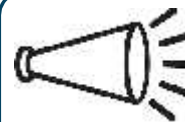


Barriers & Enablers



Social Workers are awesome

Go **BIGGER** earlier



Ongoing publicity,  
Education is promotion too



Royal commission  
supports the model





# Future of the Model & Partnership

Expansion



Strategic Roles



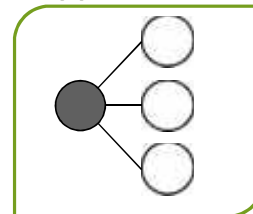
Royal Commission



Education



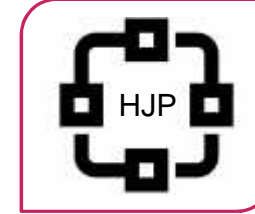
Opportunities



Services for Staff



Network



Peak Body



Diversity in the Law

