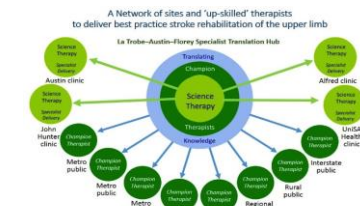




SENSe Partnership: A Network of sites and 'up-skilled' therapists to deliver best-practice stroke rehabilitation of the upper limb

Leeanne Carey, **Liana Cahill**, Brendon Haslam, Yvonne Mak-Yuen, Megan Turville, Cheryl Neilson, Natasha Lannin, Vincent Thijs, Susan Hillier, Michael Nilsson and the NHMRC SENSE Partnership Team

SENSeCONNECT



The Gap

Our national survey¹ of occupational therapists and physiotherapists (n=172) found stroke survivors are **not** receiving recommended best practice for upper limb rehabilitation.



Only **28%** of therapists were aware of published research on treatments for sensory loss after stroke¹

Our Aim

Using a 'knowledge transfer' intervention, guided by the Theoretical Domains Framework², we aim to change clinician behaviour and increase evidence-based upper limb therapy for stroke survivors.

Our Approach

This involves:

- The creation of **Knowledge Translation Hubs** with **SENSe Therapy Centres**
- The creation of an online **Community of Therapists** and **Web Based Resources**.

Results

Twelve sites are now involved nationwide.

In baseline surveys at the first 8 sites, occupational therapists and physiotherapists (n=87) reported low levels of skill in assessing and treating sensory loss in stroke survivors; Mean skill in assessment 4.5/10 and mean skill in treatment 3.8/10 on visual analogue scale.



The Exemplar

Clinical Practice Protocol : SENSe Implement



100 therapists will be 'upskilled' and SENSe Therapy delivered to 336 stroke survivors.

Through the use of SENSe Therapy³ as an exemplar, a *template for implementation* of complex evidence-based rehabilitations will be developed.

This project will allow comparison of real-world implementation in existing health settings with complementary specialist centres and improve the access of stroke survivors to evidence-based upper limb therapy.



@LeanneMCarey @LianaCahill

¹ Pumpa, 2015² Cane, 2012, Carey, 2011

